

# SARCOIDOSIS

- Idiopathic multisystem disorder
- Characterised by non-caseating granulomata
- More common in women 20-50 yrs
- More common in blacks and Asians
- ? Related to mycobacteria

# SARCOIDOSIS

## Systemic Involvement

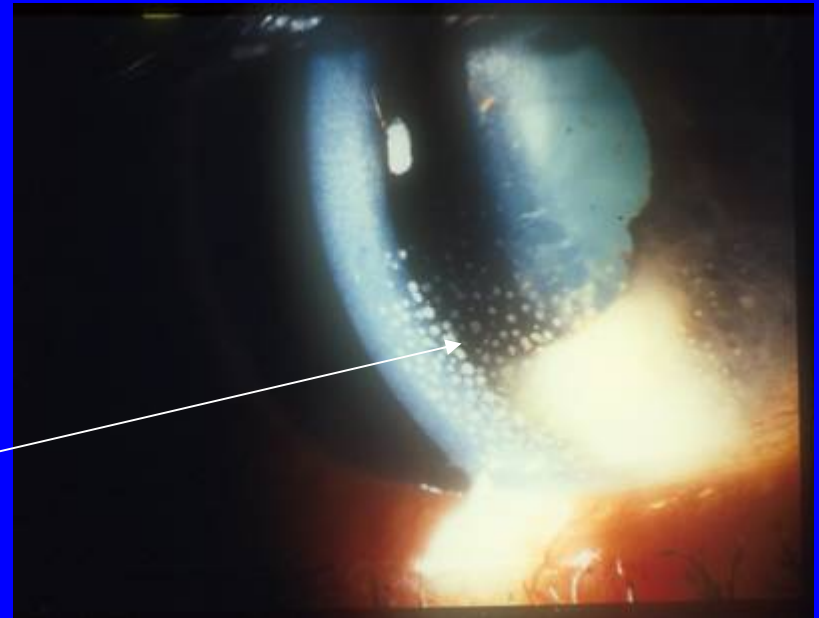
- Lung lesions – 95%
- Thoracic lymph nodes – 50%
- Skin lesions – 30% →
- Eyes – 30%



# SARCOIDOSIS

## Ocular Involvement

- **Anterior segment lesions (30%)**
  - Conjunctival granuloma
  - Lacrimal gland involvement/dry eye
  - Acute or chronic uveitis
    -
  - KPs described as ‘mutton fat’ because they are large and greasy

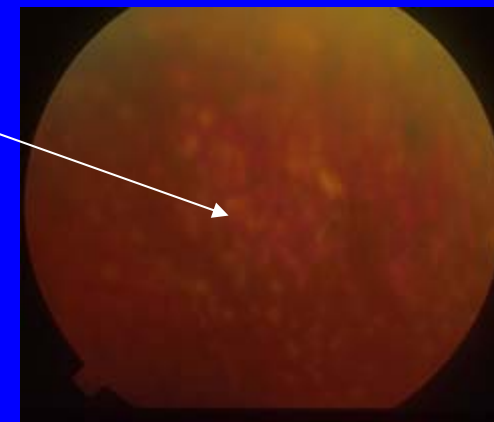
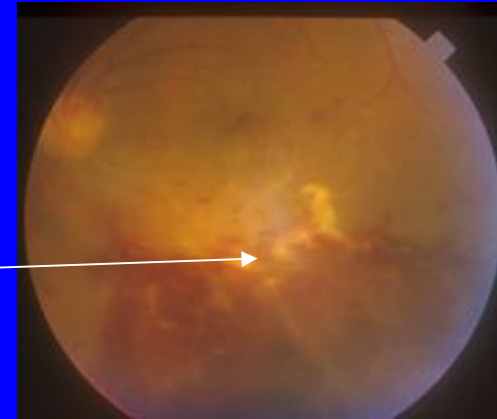


# SARCOIDOSIS

## Ocular Involvement

- **Posterior segment lesions (20%)**

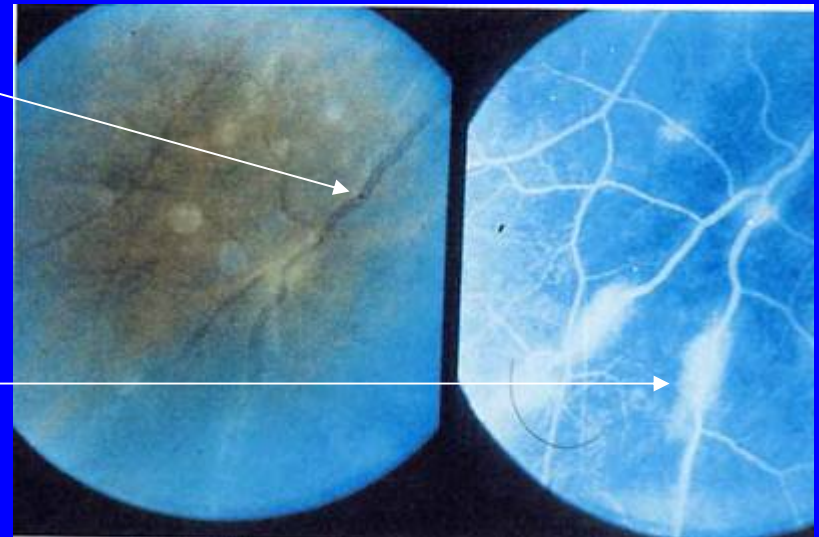
- Patchy venous sheathing
- Cellular infiltrate around vessels
- Chorioretinal granulomas
- Vasculitis including occlusive causing:-
- Neovascularisation
- Infiltrate in vitreous (vitritis) including cell clumps (snowballs)



# SARCOIDOSIS

## Ocular Involvement

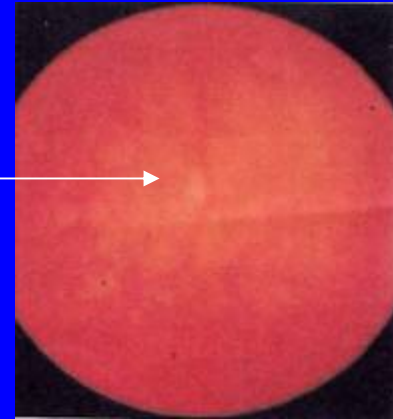
- Sheathing of the retinal veins
- Fluorescein angiography showing leakage and staining at sites of sheathing



# SARCOIDOSIS

## Granuloma in Fundus

- Retinal and pre-retinal



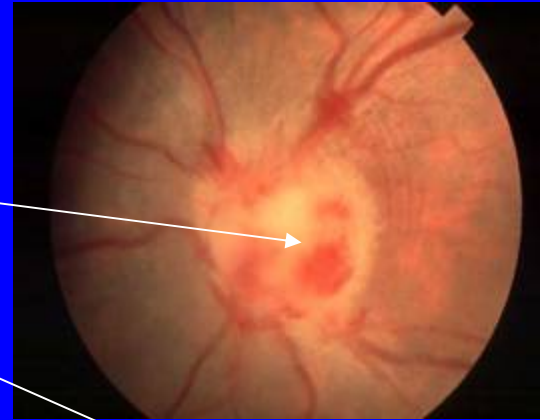
- Choroidal



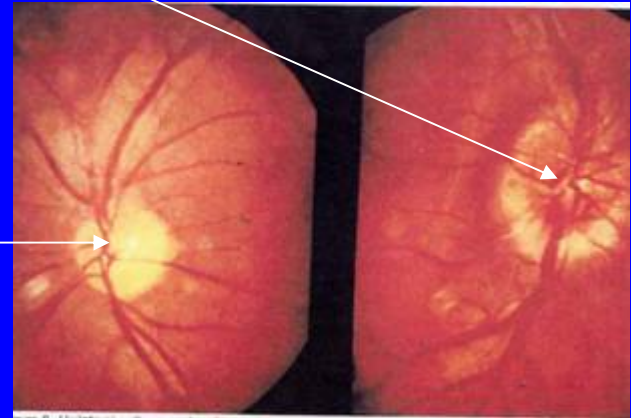
# SARCOIDOSIS

## Granuloma in Fundus

- Optic nerve head granuloma



- Normal optic nerve head



# SARCOIDOSIS

## Systemic Signs

Lupus pernio affecting the nose – a chronic progressive cutaneous sarcoid that most commonly affects face and ears





# SARCOIDOSIS

## Systemic signs

- Facial palsy



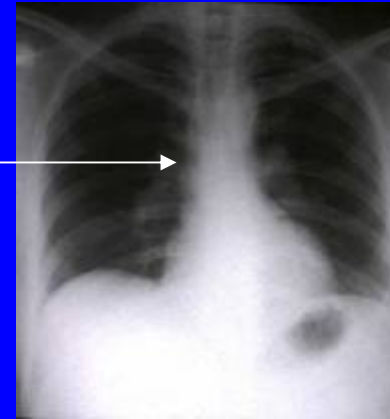
- Salivary gland enlargement



# SARCOIDOSIS

## Systemic signs

- Hilar adenopathy on chest x-ray
- Lung infiltrate
- Erythema nodosum
- Arthritis



# SARCOIDOSIS

## Investigations (1)

CXR – to detect pulmonary signs

- Bilateral hilar lymphadenopathy



- Pulmonary mottling



# SARCOIDOSIS

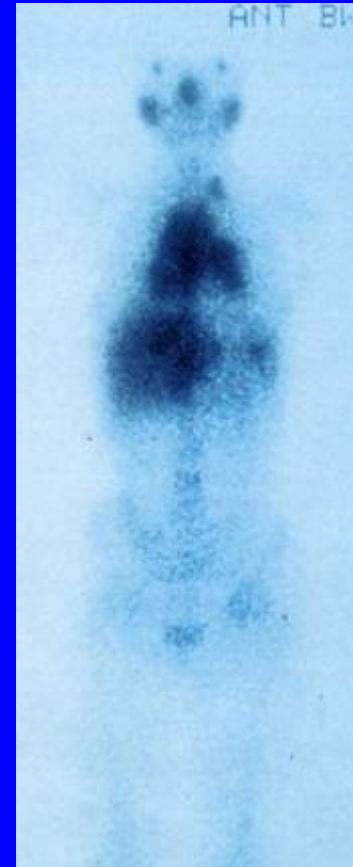
## Investigations (2)

- Serum angiotensin-converting enzyme (ACE) – elevated in active sarcoidosis
- Mantoux test – caution in patients who have had BCG vaccination. Test may be negative
- Lung function tests

# SARCOIDOSIS

## Investigations (3)

Gallium scan showing increased uptake in the lacrimal and parotid glands and pulmonary regions in a patient with active sarcoidosis



# SARCOIDOSIS

## Treatment

Systemic steroids may be necessary in patients with posterior segment disease where vision is threatened, especially if optic nerve is involved